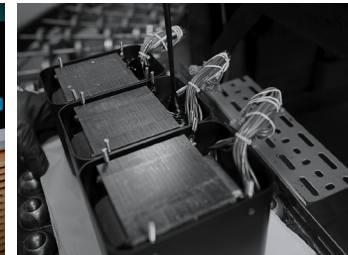


MCD12000 s a c d / c d p l a y e r

- Bring all your digital music to life with the MCD12000 SACD/CD Player. While classified as a CD player, it is better to think of the MCD12000 as a reference level Digital-to-Analog convertor (DAC) that includes reference level SACD/CD playback capabilities.
- At the heart of the MCD12000 are two ESS SABRE PRO ES9038PRO 32-bit/8-channel DACs, with one DAC dedicated to each the left and right audio channels. Music played through any of the MCD12000's digital inputs or from CDs is processed by these professional grade DACs that are designed for premium audiophile performance and recording studios.
- Includes seven digital inputs. The coax and optical inputs support up to 24-bit/192kHz. The USB input supports up to 32-bit/384kHz, as well as DSD512 and DXD384kHz.
- Offers both balanced and unbalanced fixed analog outputs in both solid-state and vacuum tube configurations. This abundance of output options gives you the flexibility to decide which to use based on the music selection, the audio components in the rest of your home audio system, and your personal sound preferences.
- All outputs are driven by discrete amplifiers or a blend of vacuum tubes and discrete amplifiers. For vacuum tube output, one 12AT7 tube and one 12AX7A tube are assigned to each the left and right audio channel. Solid-state output is via a discrete balanced op-amp.
- While the volume is controlled by your preamplifier, integrated amplifier, or other control device, the meters on the MCD12000 will respond to the music being played through it and move back and forth accordingly.



Two-in-One: A Reference Level DAC and a Reference Level CD Player

McIntosh[®]

LEGENDARY PERFORMANCE[®]

www.mcintoshlabs.com

MCD12000 s a c d / c d p l a y e r

Disc Formats:

SACD, CD, CD-R/RW and DVD-R; popular file formats such as AAC, AIFF, ALAC, DSD (up to DSD128), FLAC, MP3, WAV, and WMA

Frequency Response:

SACD: 4Hz-40kHz +0.5dB/-2dB
CD: 4Hz-20kHz +/-0.5dB

Total Harmonic Distortion:

0.003%

S/N Ratio:

110dB

Dynamic Range:

Better than 100dB

Digital-to-Analog Converter (DAC):

(2) ESS SABRE PRO ES9038PRO
32-bit/8-channel DACs configured in Octal-Balanced Mono mode

Inputs:

2 Coax
2 Optical
1 USB (Type B)
1 AES/EBU
1 MCT

Outputs:

1 Balanced Solid-State
1 Balanced Vacuum Tube
1 Unbalanced Solid-State
1 Unbalanced Vacuum Tube
1 Coax
1 Optical
(all are fixed output)

Overall Dimensions (W x H x D):

17-1/2" (44.5cm) x 7-5/8" (19.4cm)
x 16.375" (41.6cm)

Weight:

32.5 lbs (14.7kg) net,
48 lbs (21.8kg) in shipping carton

For the Consumer's Protection:

In order to ensure the highest level of customer satisfaction, new McIntosh products may only be purchased from an Authorized McIntosh Dealer; and, with certain limited exceptions may only be purchased over-the-counter or delivered and installed by the Authorized McIntosh Dealer. McIntosh does not warrant, in any way, products that are purchased from anyone who is not an Authorized McIntosh Dealer, or that have had their serial numbers altered or defaced.



MCD12000 (bottom) with two-chassis C12000 Preamplifier.
MCD12000 and C12000 sold separately.



Companion Products

The MC1.25KW or MC3500 Mk II Amplifier, C12000 Preamp, MA12000 Integrated Amplifier, MT10 Turntable, MR87 AM/FM Tuner, MS500 Music Streamer, MEN220 Room Correction System, MPC1500 Power Controller, and XRT2.1K or XRT1.1K Loudspeakers are logical companions for the MCD12000 SACD/CD Player. Your Authorized Dealer can provide additional information on other McIntosh product combinations.

To learn more, please call us at 1.800.538.6576.

McIntosh®

LEGENDARY PERFORMANCE®

www.mcintoshlabs.com