

9.2-Channel High Fidelity Class D Network AV Receiver

SC-LX89-K/-S



SC-LX89-K



SC-LX89-S

* Image after DTS:X firmware update

Enjoy precise audio reproduction, just as the creators intended with the flagship AV receiver featuring Direct Energy HD (High fidelity class D) amplifier, SABRE³² Ultra DAC, and AIR Studios Monitor Certification. Dolby Atmos[®] brings a new level of surround sound in the ideal environment made by Pioneer's MCACC Pro auto-room calibration, while the object-based DTS:X[™] format will also be available with firmware update. Other highlights include video scaler with Super Resolution, Ultra HD Pass-through with HDCP 2.2, and USB-DAC.

AMPLIFICATION

- › Channels: 9
- › Amplification Type: Class D (Direct Energy HD)
- › 850 W Multi ch Simultaneous Drive (8 ohms, 1 kHz, THD 1.0 %)
- › 260 W/ch (4 ohms, 1 kHz, THD 1.0 %, 1ch Driven)
- › 220 W/ch (6 ohms, 1 kHz, THD 1.0 %, 1ch Driven)

CONSTRUCTION DESIGN

- › Advanced Direct Construction
- › Rigid Trans-Stabilizer
- › Insulated Dual Chassis
- › 3D Space Frame Construction
- › Low Leakage Flux Power Transformer
- › Anti-Standing Wave Insulator

AUDIO FEATURES

- › AIR Studios Monitor Certification
- › Dolby Atmos[®]/Dolby[®] TrueHD/Dolby Digital Plus/Dolby Surround
- › DTS:X/DTS Neural:X[™] Ready*1
- › DTS-HD Master Audio/DTS-ES/DTS Neo:X|11.1
- › USB-DAC 192 kHz/32-bit with DSD Native Playback
- › DSD Direct Playback via Network/USB (2.8 MHz, 5.6 MHz/2ch)
- › DSD Disc (SACD) Playback via HDMI (2.8 MHz/5.1ch, 2ch)
- › SABRE³² Ultra DAC (ES9016S) for 9.2ch
- › Audio Scaler 192 kHz/32-bit Enhancer
- › MCACC Pro Room Calibration
 - Full Band Phase Control
 - Auto Phase Control Plus/Phase Control Plus
 - Standing Wave Control
 - 3D Time Axis Measurement
 - Precision Distance
 - Subwoofer EQ (4 Band)
 - Bass Management System for Dolby Atmos Enabled Speakers
- › Sound Enhancements
 - PQLS Bit-stream/Multi-Surround/2ch
 - Advanced Sound Retriever (Multi-ch)
 - Auto Sound Retriever/Auto Sound Retriever for ARC
 - Auto Level Control (Multi-ch)
 - Virtual Speakers (Wide/Height/Surround Back)
 - Rendering Mode

- › Advanced Surround Modes
 - Action, Drama, Advanced Game, Sports, Classical, Rock/Pop
 - Front Stage Surround
 - Sound Retriever Air, Phones Surround
 - ECO Mode 1, ECO Mode 2
- › Input Volume Absorber
- › Speaker System 15 Patterns Including 7 Patterns for Dolby Atmos

Video Features

- › Ultra HD Pass-through with HDCP 2.2 (4K/60p/4:4:4/24-bit, 4K/24p/4:4:4/36-bit, 4K/60p/4:2:2/36-bit)
- › Video Scaler (1080p to 4K) with Super Resolution
- › Triple HD Noise Reduction
- › Advanced Video Adjust
- › Stream Smoother/Stream Smoother Link

HOME NETWORK FEATURES

- › Apple AirPlay Certified
- › DLNA Certified[™] (1.5)
- › HTC Connect[™] Certified
- › Compatible with Windows[®] 8
- › Music File Playback/Seek via Network/USB: AIFF, Apple Lossless, WAV, FLAC, MP3, WMA, AAC, DSD
 - 192 kHz/24-Bit Audio playback (AIFF, Apple Lossless, WAV, FLAC)
 - Multi-Channel (5.1ch, 5.0ch) Audio Playback (WAV*2, FLAC*3)
- › Gapless Playback for AIFF, Apple Lossless, WAV, FLAC, AAC, MP3, DSD
- › Spotify[®] Digital Music-Streaming Service Ready*4
- › Internet Radio with vTuner

CONVENIENCE FEATURES

- › iPod Digital Transmission via Front USB Terminal
- › Android[™] Audio/Video Playback with MHL[™]
- › Start-up Navi (Initial Setting App) Ready (iOS/Android)*5
- › AVNavigator (Wiring Navi/Interactive Operation Guide)
- › iControlAV5 Remote Control App Ready (iOS/Android)*5
- › HDMI ZONE Out (HDZONE)
- › Built-in Wi-Fi[®] (Dual Band 5 GHz/2.4 GHz)
- › Built-in Bluetooth[®] Wireless Technology (Version: 2.1 + EDR, Profile: A2DP/AVRCP, Codec: SBC/AAC)
- › Power Save for HDMI Standby Through
- › Learning Remote Control (Luminous)

FRONT TERMINALS

- › HDMI 1 in
- › USB 1 in for iPod/iPhone, USB drive
- › MCACC Setup MIC in
- › Phones 1 out

- › AV (Composite) 2 In/1 Out
- › Audio 1 In (assignable)
- › Phono (MM) 1 In
- › Digital Coaxial 2 In (assignable)
- › Digital Optical 2 In (assignable)/1 Out
- › USB-DAC In (B-Type)
- › Component Video 2 In (assignable)
- › Monitor Component 1 Out/Monitor Composite 1 Out
- › Preout 11.2 ch (13.2 ch terminals)
- › Speaker 11 ch Out
- › Independent Dual Subwoofer

- › IR 2 In/1 Out
- › 12 V Trigger x 2/RS-232C

REAR TERMINALS

- › HDMI 7 in (7 assignable, 1 for HDMI/MHL)
- › HDMI 3 out (2 for MAIN, 1 for MAIN/HDZONE)
- › Ethernet 1 In

SPECIFICATIONS

- › Power Requirements: AC 220-230 V, 50/60 Hz
- › Power Consumption/Standby: 370 W/0.1 W
- › Dimensions (W x H x D): 435 x 185 x 441 mm
- › Weight: 18.1 kg

*1 Firmware update required *2 Up to 192 kHz streams via USB, up to 96 kHz streams via wired LAN, up to 48 kHz via wireless LAN *3 Up to 96 kHz streams

*4 For service availability in your country, check www.spotify.com *5 Available for free download from the App Store/the Google Play[™]

REAR PANEL



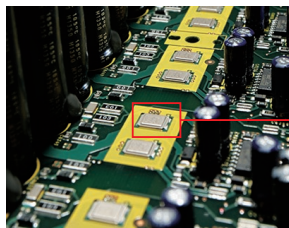
SC-LX89-K/SYXJ8



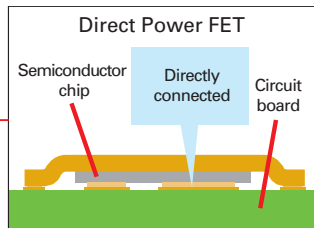
SC-LX89-S/SYXJ8

Direct Energy HD Amplifier

For the ideal multi-channel environment, all channels should have the same speakers, driven by the same amplifier, under same conditions. So for the SC-LX89-K/-S, Pioneer has adopted the Direct Energy HD Amplifier capable of simultaneous high-power output for all channels. The core Direct Power FET has a simple structure with the semiconductor chip directly mounted on the circuit board. As a result, a large reduction in inductance components for improved signal quality, smaller heat sink by efficient heat dissipation, and shorter transmission path by cleaner circuitry have been achieved, realizing quality sound, high-power output, and high efficiency at the same time. As the Direct Energy HD Amplifier continues to improve by each generation, it creates the ideal reproduction environment for object audio as well as legacy formats.



Direct Power FET on Direct Energy HD Amplifier



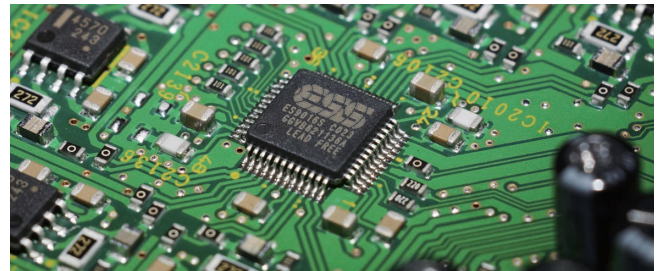
Direct Power FET Structure

Full Band Phase Control

Pioneer's Phase Control technology effectively eliminates phase lag and significantly improves the multi-channel sound without any extra operation. Furthermore, the Full Band Phase Control technology focuses on the group delay in the speaker network filter, and adjusts the phase of each unit as well as the group delay for each speaker. Multi-range speakers gain the sound coherence of full-range speakers, while retaining the wide frequency range advantage. In an environment where the phase of all units and all channels are precisely controlled, a remarkably clear sound location with a surrounding feel is achieved. In combination with MCACC Pro's auto room tuning technology, the ideal multi-channel reproduction environment can be created, which faithfully replicates object audio and the intention of the directors.

ESS SABRE³² Ultra DAC

The highly acclaimed 192 kHz/32-bit ESS SABRE³² Ultra DAC (ES9016S) delivers exceptional sound with ultra-low distortion and high S/N ratio. It offers jitter-free performance for an astounding audio reproduction with rich deep bass.



DTS:X Ready

DTS:X is the next-generation audio codec from DTS that leverages object-based audio to enable new immersive and interactive audio experiences. Since DTS:X can automatically adapt the audio to the existing channels and speakers system, no specific speaker layout is required. Experience an immersive soundscape with incredibly rich and life-like audio. With the ideal reproduction environment created by MCACC Pro, and the powerful and precise multi-channel output by the Direct Energy HD Amplifier, the SC-LX89-K/-S maximises the advantages of the DTS:X format.



* DTS:X will be available with firmware update.

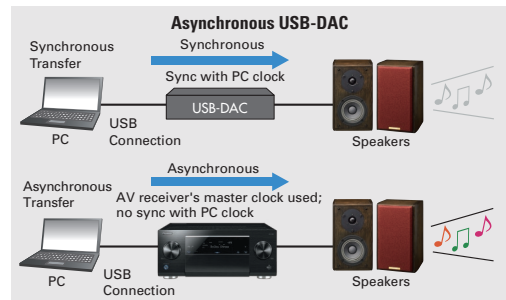
Dolby Atmos[®]

The SC-LX89-K/-S is compatible with the 7.2.4ch*, 9.2.2ch*, 7.2.2ch, 5.2.4ch configurations of Dolby Atmos[®]. You can reproduce object-oriented sound in smooth, curving movements, or the realistic three-dimensional movement overhead by the top speakers. However, the appropriate playback environment is required to bring out the best from Dolby Atmos. This is provided by MCACC Pro, which allows the most precise speaker drive for faithful reproduction of the true-to-life soundscape of Dolby Atmos. With synchronised sound and image, you can experience total immersion in the movie world.

* External amplifier required

USB-DAC

The SC-LX89-K/-S allows direct USB connection with a computer by USB asynchronous signal transfer, which eliminates jitter and reproduces master quality sound with extremely precise audio signals. Native DSD playback is also supported.



Available with firmware update



PIONEER and the Pioneer logo are registered trademarks of Pioneer Corporation, and are used under license. •AIR STUDIOS and the AIR STUDIOS logo are registered trademarks of Air Studios, Inc. •The terms HDMI and HDMI High-Definition Multimedia Interface, and the HDMI Logo are trademarks or registered trademarks of HDMI Licensing LLC in the United States and other countries. •Dolby, Dolby Atmos and the double-D symbol are registered trademarks of Dolby Laboratories. •For DTS patents, see http://patents.dts.com. Manufactured under license from DTS, Inc. DTS, the Symbol, DTS in combination with the Symbol, DTS:X, and the DTS:X logo are registered trademarks or trademarks of DTS, Inc. in the United States and/or other countries. © DTS, Inc. All Rights Reserved. •Windows and the Windows logo are trademarks of the Microsoft group of companies. •AirPlay works with iPhone, iPad, and iPod touch with iOS 4.3.3 or later, Mac with OS X Mountain Lion, and Mac and PC with iTunes 10.2.2 or later. "Made for iPod" and "Made for iPhone" mean that an electronic accessory has been designed to connect specifically to iPod or iPhone respectively, and has been certified by the developer to meet Apple performance standards. Apple is not responsible for the operation of this device or its compliance with safety and regulatory standards. Please note that the use of this accessory with iPod or iPhone may affect wireless performance. Apple, AirPlay, iPad, iPhone, iPod, iPod nano, iPod touch, iTunes and Mac are trademarks of Apple Inc., registered in the U.S. and other countries. App Store is a service mark of Apple Inc. The AirPlay logo is a trademark of Apple Inc. •Wi-Fi[®] is a registered trademark of the Wi-Fi Alliance. The Wi-Fi CERTIFIED logo is a certification mark of the Wi-Fi Alliance. •The Bluetooth[®] word mark and logos are registered trademarks owned by Bluetooth SIG, Inc. •DLNA[™], the DLNA Logo and DLNA Certified[™] are trademarks, service marks, or certification marks of the Digital Living Network Alliance. •HTC, the HTC logo, and HTC Connect are trademarks of HTC Corporation. •SABRE[™] is a trademark of ESS Technology, Inc. •Android and Google Play are trademarks of Google Inc. •MHL, the MHL Logo, and Mobile High-Definition Link are trademarks or registered trademarks of MHL LLC in the United States and other countries. •Spotify and the Spotify logo are trademarks of the Spotify Group, registered in the U.S. and other countries. •vTuner is a registered trademark of Nothing Else Matters Software, Ltd. •Phase Control is a trademark placed on a product with Pioneer's Phase Control Technology concept. The technology enables high-grade sound reproduction environment by improving the phase matching for each of the components. •The product with the Hi-Res Audio logo is conformed to Hi-Res Audio standard defined by Japan Audio Society. The logo is used under license from Japan Audio Society.